

CONTROLLED ENVIRONMENT CHAMBER

Model 5532

The Model 5532 is designed to accommodate equipment and material requiring a precise, stable environment, excellent visibility and a large internal work area (13 cu. ft., 368 l). The system independently maintains humidity from <10 to >98% RH and temperature from <60 to >122°F (16-50°C) when used in an area maintained at 23°C. Uses include weighing, testing, storage, fabrication and conditioning for consumer product development, biomedical, pharmaceutical, automotive, electronic, electrostatic, DOD, food product analysis, university research and other applications. The Model 5532 is available in 115 and 230 VAC versions.

Features:

- Microprocessor PID control
- Multiple ramp/soak
- Computer software package
- Front & side doors
- 8" Ports with gloves
- Fluorescent lighting
- Internal fans and AC power
- Clear & white acrylic with PS30 welded seams
- Continuous set point & level displays
- Thermoelectric cooling & electric heating systems
- High capacity dehumidification & humidification systems
- System upgrades & 3rd parameter monitoring & control available



Performance Characteristics:

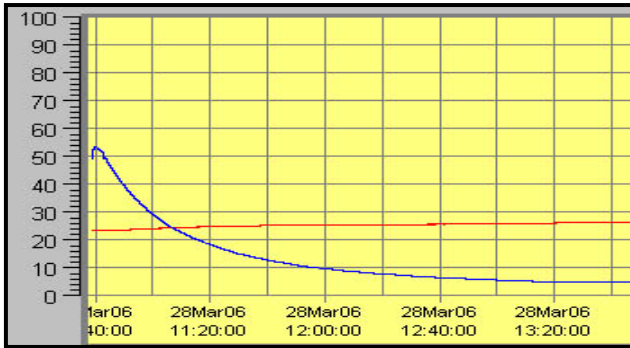
Equipment and samples placed inside the environment will have an impact on the conditions that can be maintained and the time required to increase or decrease to the set point. Any item that adds heat or humidity to the environment will have an impact on system performance. Chamber performance pertains to the ability of the chamber to reach and then hold a given level along with gradients. It is not only a function of the chamber, but the ambient humidity and temperature, operating systems and controllers used. The following charts show the time typically required to decrease and increase humidity (Blue = RH, Red = T °C) plus humidity gradients in a no-load situation.



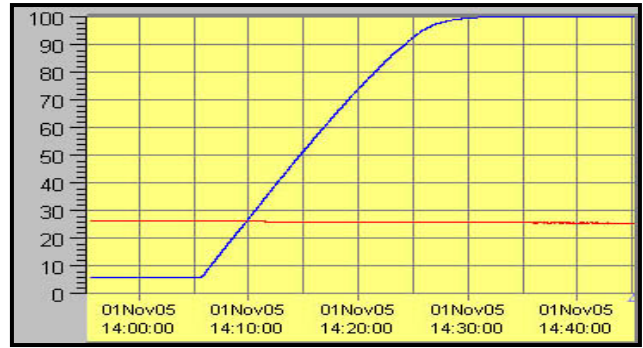
electro-tech systems, inc.

www.electrotechsystems.com

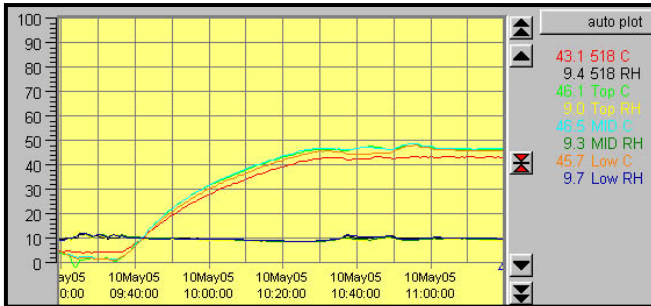
3101 Mt. Carmel Avenue, Glenside, PA 19038 • Tel: (215) 887-2196 • Fax: (215) 887-0131



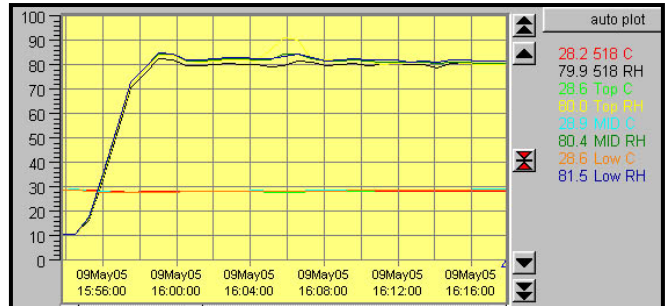
Rate of decrease (Blue = RH)



Rate of increase (Blue = RH)



Increase temperature, constant low RH



Increase RH @ 23°C

Specifications:

Chamber:

Dimensions:

Overall: 54"Wx25.25"Dx21.75"H (137x64x55cm)
 Working space: 38.75"Wx24.5"Dx21"H (98x62x53cm)
 Full clearance: 35.75"Wx20"Dx18"H

Weight: 130 lbs. (59 kg)

Material:

3/8" (6mm) clear & white acrylic

Construction: PS30 polished welded seams
 PS30 polished welded seams

Doors: 3/8" (9mm) clear acrylic, 1/2-turn latches

Front: 32" x 14" (81 x 35 cm) Access Opening

Side: 14" x 4" (35 x 10 cm) Access Opening

Seal: 1/4" (6mm) Poron, non-setting gasket

Operating Range:

Humidity: <10 to >98% @ 23°C ambient

Temp: <60->122°F (16-50°C) @ 23°C ambient

Controllers:

Two (2) CAL 9500, multiple ramp/soak cycles

Optional 3rd parameter, linear input

Resolution: 0.1%/0.1°

Rec. Out: Humidity: 0-1VDC (0 to 100% RH)

Temperature: 0-1VDC (-40 to 60°C)

Computer Interface:

MODBUS pro. via RS485-PC (Serial or USB)

with W98, XP, W7Pro (No function with W7 Home)

Sensor: (Extends 3" into chamber on right side wall)

Type: Temperature compensated RH/Temp

RH: Capacitive film, 0 to 100%, non-condensing

Temp: RTD, -40 to +140°F (-40 to 60°C)

Accuracy: ±1.5% RH @ 72°F (22°C) ±0.5°F (±0.3°C)

Lighting: 18W sealed fluorescent, ON/OFF sw
 (Light extends 3" down from top of chamber.)

Gloves: .018" (0.5mm), replaceable hands,
 natural rubber, accordion sleeves standard

Optional: Iris Ports, No Ports

Fans: 2x110 cfm (6230 l/min), ON/OFF/ADJ

Ports on Right-Hand Side:

Qty: 2x1/4" (6mm) Quick Connect (Dehumidification)

Qty: 1x1" (25.4mm) Hose Barb (Humidification)

Port on Left-Hand Side:

1x1.5" (31.4mm) Cable pass through

Power:

Voltage: 115/230VAC, 50/60Hz

Current: 8 Amps/4 Amps

Shipping: Chamber: 63"x36"x 33" 190-lbs.

Accessories: 22"x22"x14" 27-lbs.

Operating Systems:

Dehumidify: Desiccant/Pump

2.5 lb (1.1kg) CaSO₄, 0.71cfm (120 l/min)

Humidify: Single Head Ultrasonic

Capacity: 5 gal (19 l) ext. tank or direct hookup.

Humidifier pump flow rate 0.71cfm (120 l/min)

Heat: Electric, 500W

(Mounted internally on rear wall of chamber.)

Cool: 150W Thermoelectric (Std.), 300W (Opt.)

(Mounted on outside of chamber. Extends 3.25")

Warranty: One (1) year

Specifications are subject to change without notice.