

STANDARD PAPER SHEET FORMER (ISO) FH-01 model

To manufacture (former) paper samples in the Laboratory

According to Standards: ISO 5269/2 - DIN 54.358 parte 1 - UNE 57.042/2 - NF Q 50.002

In order to knowing the physical-mechanical and optic properties of the paper, cardboard and similar materials, it is necessary to manufacture them in the laboratory with a method quick and reliable that allows a sequence of quick realization of leaves under some similar conditions

The equipment is formed :

- ❑ A base in communication with the formation recipient
- ❑ A grill covered with a metallic mesh
- ❑ A cylinder of transparent plastic.
- ❑ This cylinder is adjusted to the circular grill
- ❑ An aspiration system in form of siphon.

The accessories have the strictly defined characteristics for the standard

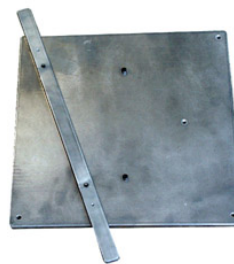
- ✓ Stirrer (fig.1)
- ✓ Couch roll (fig.2)
- ✓ Tool for metallic mesh change (fig.3)



(Fig.1)



(Fig.2)



(Fig.3)



The useful diameter forming the paper sheet is 215 mm

DIMENSIONS AND WEIGHT:

Dimensions: 870 x 450 x 1400 mm (W x D x H)
 Box for Transport: 900 x 600 x 1650 mm (W x D x H)
 Weight Net/ Gross: 70 Kg / 116 Kg

STANDARD DELIVERY CONTENT:

> Standard Sheet Former FH-01 + Stirrer + Couch Roll +
 > Tool for metallic mesh change

* TECHLAB SYSTEMS reserves the right to do any technique modification without advance notice

Doc. : FH01-1-CAT-I-R2